



2025/26
ENG Forest Trailers
for Tractors & ATV-s



BUILT TO LAST

ABOUT THE COMPANY

COUNTRY forestry machinery

We produce forest trailers equipped with cranes for transporting wood by tractors or ATV-s.

Our goal is to offer our clients lasting technical solutions and to enhance our products in cooperation with the customers. The relation with our customers, whose satisfaction we value a lot, is based on mutual loyalty and trust.

We approach each client individually and offer them tailor-made solutions. Often a product is purchased with an aim to use it with an existing trailer, wood splitter or chipper. In that case we adjust the crane to fit the existing equipment.

We use in our production the highest quality European components and special steels.

The product line of COUNTRY is growing constantly. New models with improved technical solutions are released continuously. We are always a step ahead from the needs of our clients.

PRODUCT RANGE - CRANES

Smart series

Lightweight, efficient and durable trailers equipped with cranes are designed for small tractors or ATV-s. Their light weight spares forest ground and vegetation.

Master series

MASTER series is designed for forest owners and farmers. This affordable but at the same time efficient and durable crane can be used also for different types of farm works.

Pro series

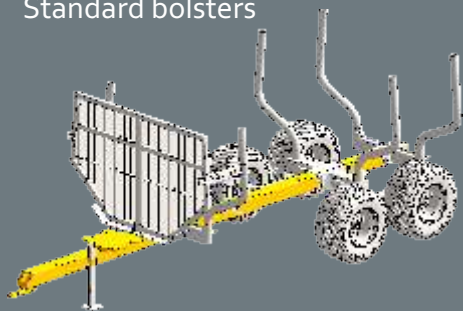
PRO series professional trailers equipped with cranes are designed specifically for daily transportation of logs. The reliable and durable PRO series cranes last intense load even in extremest conditions.

PRODUCT RANGE - TRAILERS

COUNTRY trailers model names and description

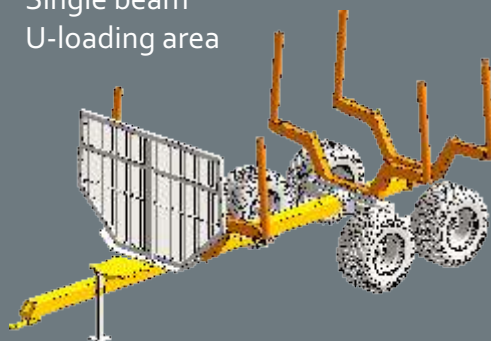
90S

Single beam
Standard bolsters



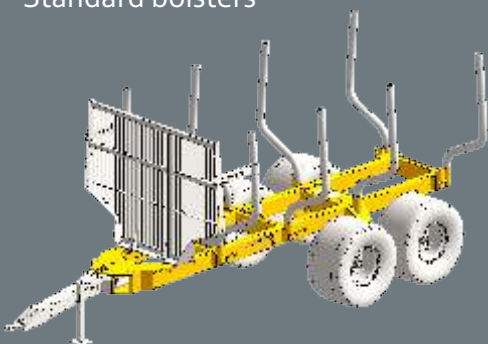
90SU

Single beam
U-loading area



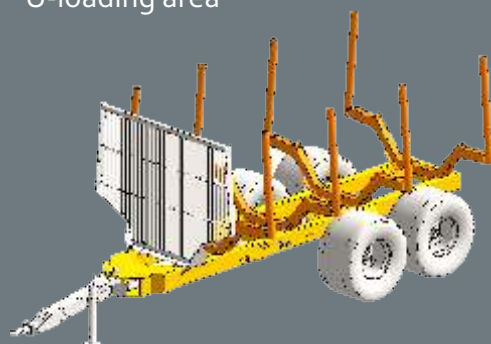
110D

Double beam
Standard bolsters



110DU

Double beam
U-loading area



Quality and Safety in Compliance with European Standards

COUNTRY offers a diverse range of high-capacity trailers that can be equipped with various COUNTRY products and accessories. These multi-purpose trailers are built to meet the expectations of every customer – durable, user-friendly, and stable even in challenging terrain.

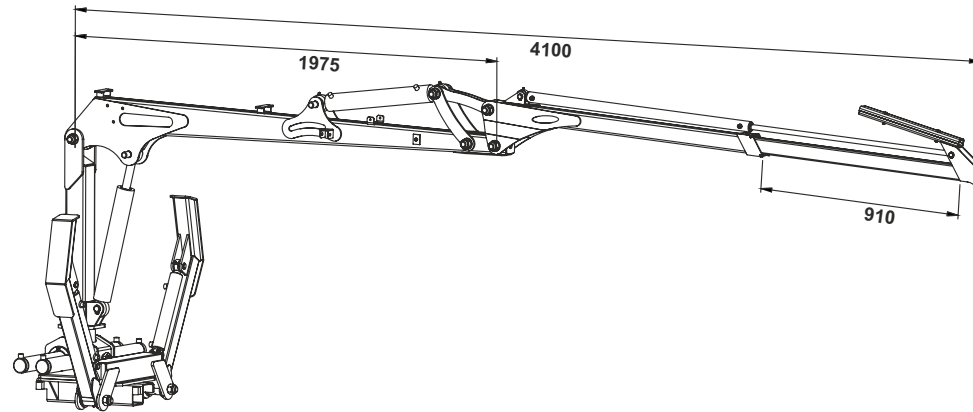
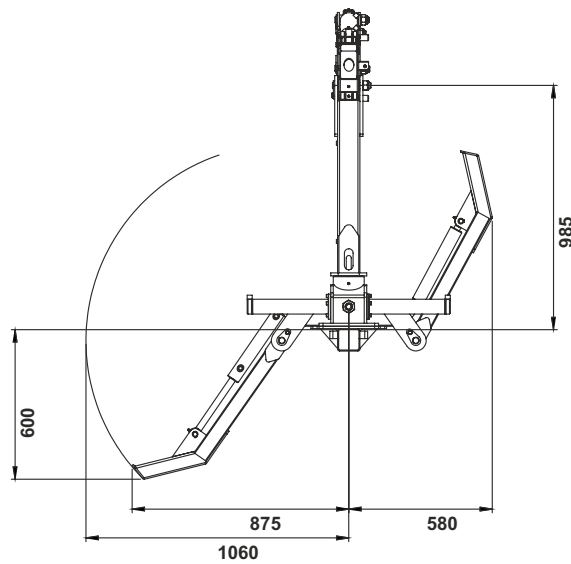
Thanks to the wide compatibility between products and accessories, each customer can configure a trailer solution that best suits their individual needs.

COUNTRY trailers are now **EU type-approved!** R2 and R3 trailers can be registered in all European Union member states, as well as in Norway and other applicable neighboring countries. With the appropriate equipment and markings, the trailers are permitted for use on public roads at speeds of up to 30 km/h. All required trailer components are certified, and the braking systems have passed all needed tests — ensuring reliability, safety, and full compliance with strict regulations.

Table of contents

Crane 410 Smart	5
Crane 430 Master	6
Crane 500 Smart	7
Crane 550 Master	8
Crane 670 Master	9
Crane 700 Pro	10
Crane 720 Pro	11
Crane 760 Pro	12
Crane 850 Pro	13
Crane 950 pro	14
Cranes technical specifications	15
Trailers technical specifications	16
Trailer 15S / 30S	17
Trailer 50S / 70S	18
Trailer 90S / 110S	19
Trailer 90SU / 110SU	20
Trailer 90SU Swing / 110SU Swing	21
Trailer 90D / 110D / 110D Heavy	22
Trailer 90DU / 110DU / 110DU Heavy	23
Trailer 130D / 150D	24
Trailer 130DU / 150DU	25
Cranes and trailers compatibility	26
Accessories	27
Accessories	28
Grapples	29
Control valves	30



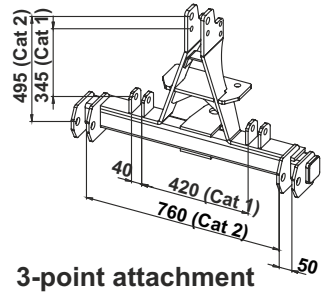


Crane 410 Smart

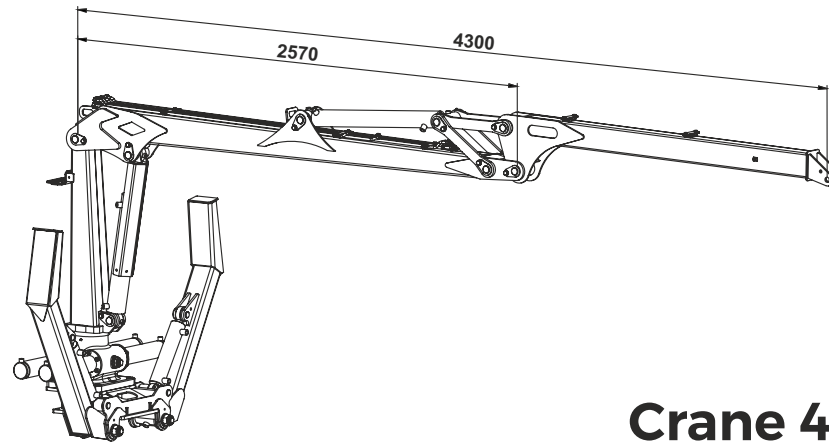
	410 Smart
Max reach (m)	4.1
Lifting torque gross (kNm)	12
Lifting capacity at 3,5 m w/o rotator and grapple (kg)	280
Lifting capacity at full reach w/o rotator and grapple (kg)	180
Slewing torque (kNm)	2 or 4
Slewing cylinders (pcs)	2 or 4
Slewing angle	360
Rotator max axial load (kN)	10
Telescope extension (pcs)	1
Telescopic boom stroke length (m)	0.9
Working pressure (bar)	175
Crane's weight without support legs and valve block (kg)	167
Reccommended oil pump capacity (l/min)	5-15
Support legs type	FD
A type (telescopic) support legs weight (kg)	-
FD type SMART (flap down) support legs weight (kg)	60
FD type MASTER (flap down) support legs weight (kg)	-
FD type PRO (flap down) support legs weight (kg)	-
Reccommended grapple	0.08



Master Series



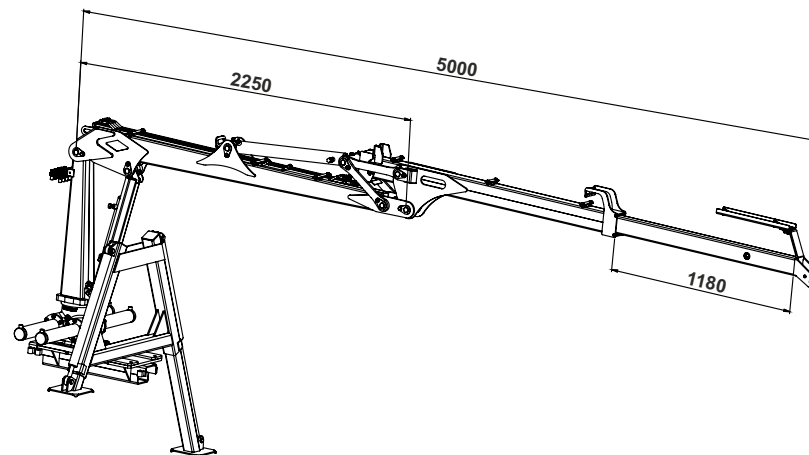
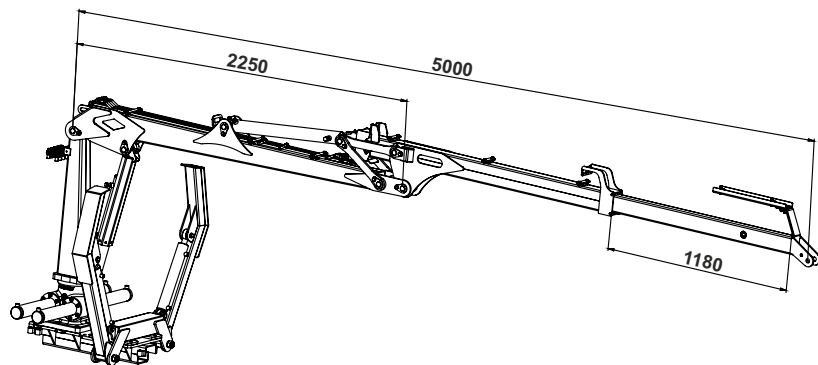
3-point attachment



Crane 430 Master



	430 Master
Max reach (m)	4.3
Lifting torque gross (kNm)	27
Lifting capacity at 3,5 m w/o rotator and grapple (kg)	660
Lifting capacity at full reach w/o rotator and grapple (kg)	538
Slewing torque (kNm)	7.8
Slewing cylinders (pcs)	4
Slewing angle	370
Rotator max axial load (kN)	30
Telescope extension (pcs)	-
Telescopic boom stroke length (m)	-
Working pressure (bar)	180
Crane's weight without support legs and valve block (kg)	335
Reccommended oil pump capacity (l/min)	20-35
Support legs type	FD
A type (telescopic) support legs weight (kg)	-
FD type SMART (flap down) support legs weight (kg)	-
FD type MASTER (flap down) support legs weight (kg)	135
FD type PRO (flap down) support legs weight (kg)	-
Reccommended grapple	0.12 / 0.15 Pro 0.17



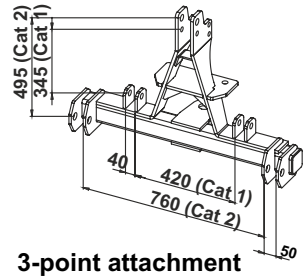
CRANE 500 Smart

500 Smart

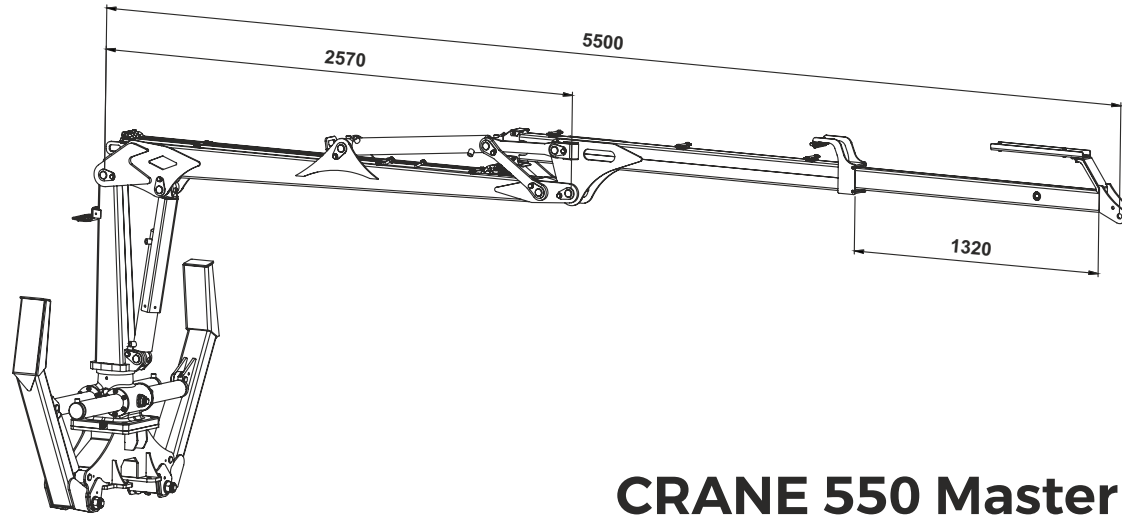
Max reach (m)	5.0
Lifting torque gross (kNm)	23
Lifting capacity at 3,5 m w/o rotator and grapple (kg)	550
Lifting capacity at full reach w/o rotator and grapple (kg)	382
Slewing torque (kNm)	6.3
Slewing cylinders (pcs)	4
Slewing angle	370
Rotator max axial load (kN)	30
Telescope extension (pcs)	1
Telescopic boom stroke length (m)	1.1
Working pressure (bar)	180
Crane's weight without support legs and valve block (kg)	315
Recommended oil pump capacity (l/min)	15-30
Support legs type	A or FD
A type (telescopic) support legs weight (kg)	92
FD type SMART (flap down) support legs weight (kg)	91
FD type MASTER (flap down) support legs weight (kg)	-
FD type PRO (flap down) support legs weight (kg)	-
Recommended grapple	0.12 / 0.15 Pro



Master Series



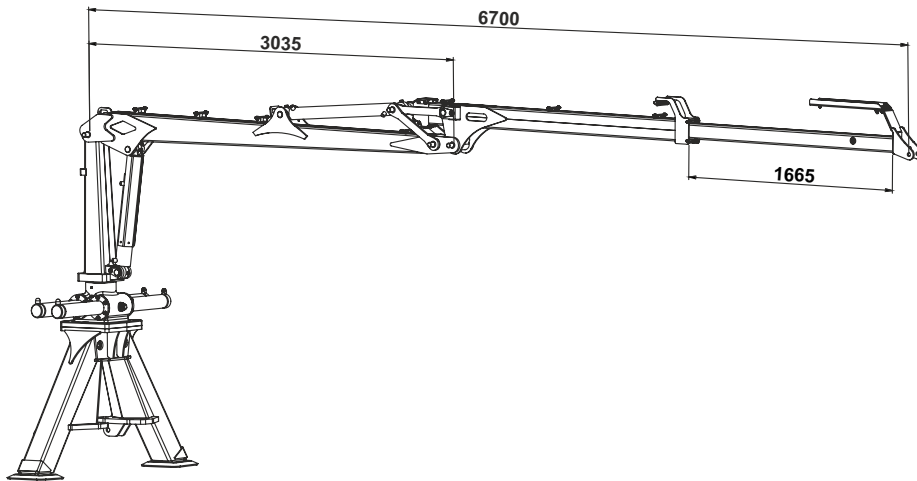
3-point attachment



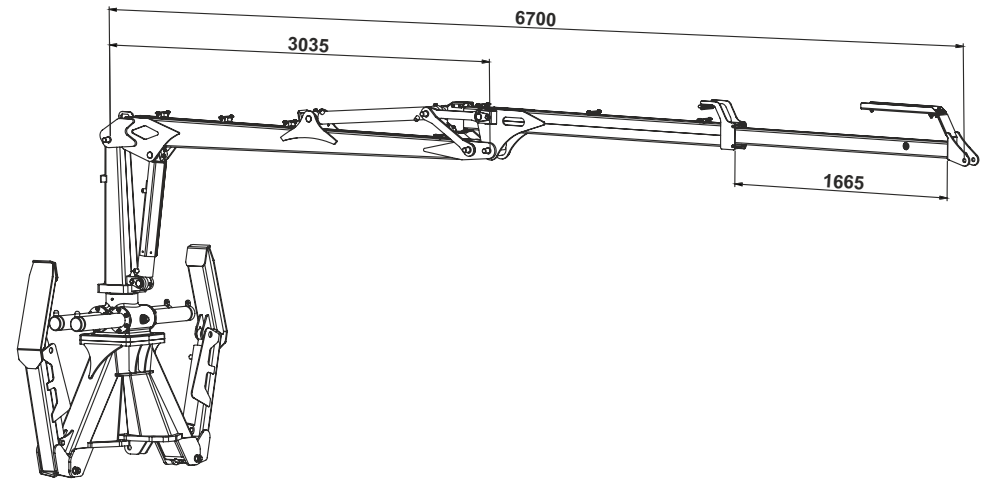
CRANE 550 Master



	550 Master
Max reach (m)	5.5
Lifting torque gross (kNm)	27
Lifting capacity at 3,5 m w/o rotator and grapple (kg)	618
Lifting capacity at full reach w/o rotator and grapple (kg)	390
Slewing torque (kNm)	7.8
Slewing cylinders (pcs)	4
Slewing angle	370
Rotator max axial load (kN)	30
Telescope extension (pcs)	1
Telescopic boom stroke length (m)	1.3
Working pressure (bar)	180
Crane`s weight without support legs and valve block (kg)	375
Reccommended oil pump capacity (l/min)	20-35
Support legs type	FD
A type (telescopic) support legs weight (kg)	-
FD type SMART (flap down) support legs weight (kg)	-
FD type MASTER (flap down) support legs weight (kg)	135
FD type PRO (flap down) support legs weight (kg)	-
Reccommended grapple	0.12 / 0.15 Pro 0.17



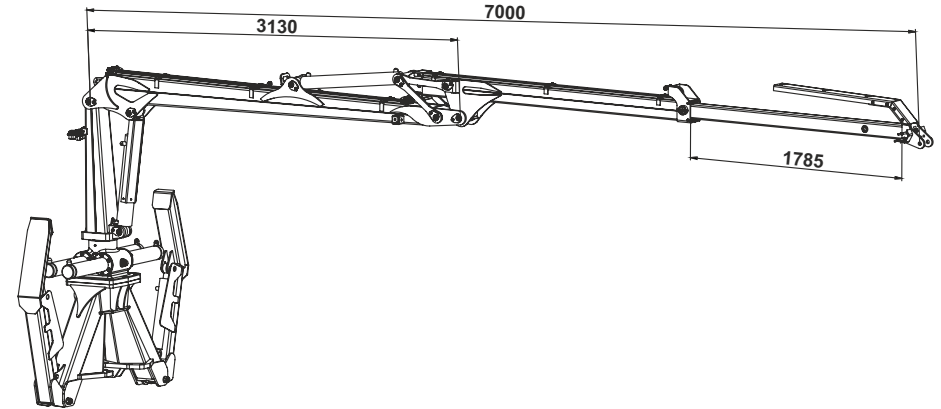
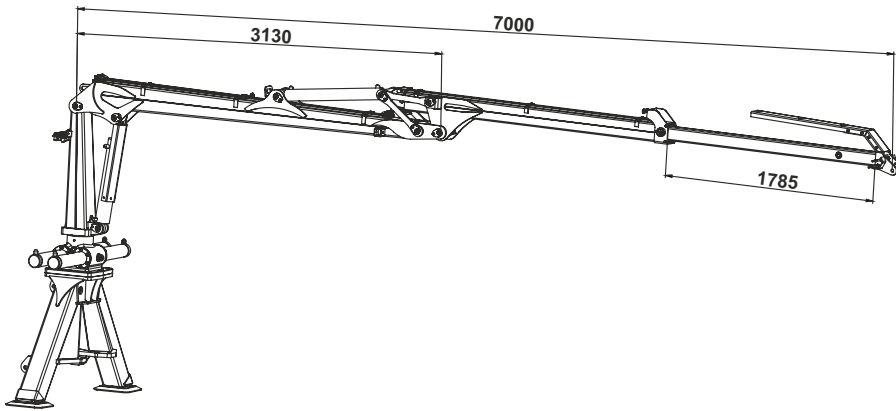
CRANE 670 Master



	670 Master
Max reach (m)	6.7
Lifting torque gross (kNm)	39
Lifting capacity at 3,5 m w/o rotator and grapple (kg)	870
Lifting capacity at full reach w/o rotator and grapple (kg)	451
Slewing torque (kNm)	12
Slewing cylinders (pcs)	4
Slewing angle	380
Rotator max axial load (kN)	30
Telescope extension (pcs)	1
Telescopic boom stroke length (m)	1.7
Working pressure (bar)	190
Crane's weight without support legs and valve block (kg)	565
Recommended oil pump capacity (l/min)	30-45
Support legs type	A or FD
A type (telescopic) support legs weight (kg)	319
FD type SMART (flap down) support legs weight (kg)	-
FD type MASTER (flap down) support legs weight (kg)	338
FD type PRO (flap down) support legs weight (kg)	420
Recommended grapple	0.17 / 0.19 Pro 0.22 / 0.23 Pro



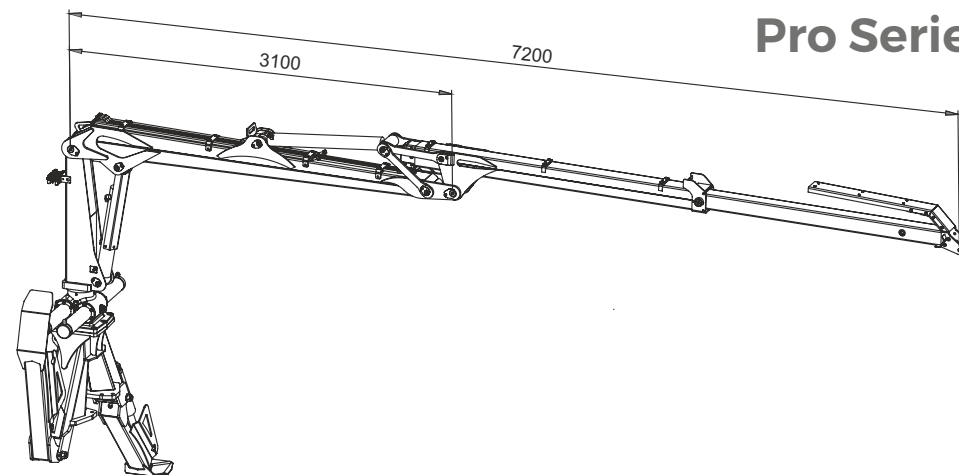
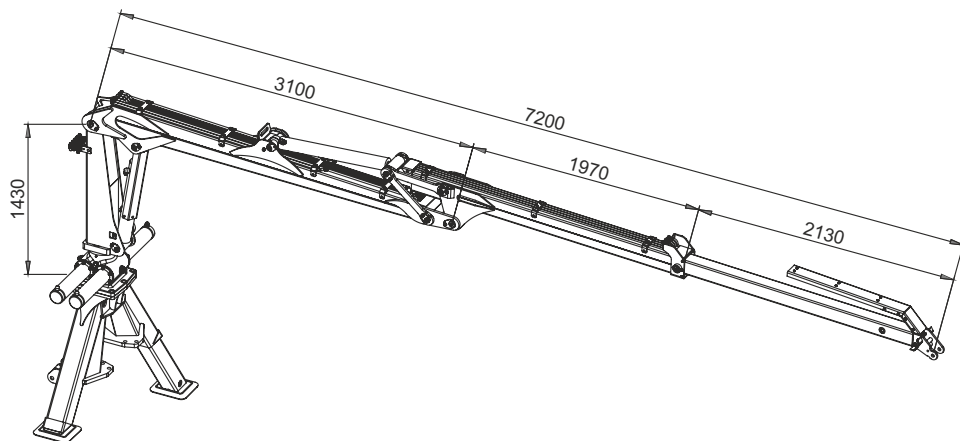
Pro Series



CRANE 700 Pro



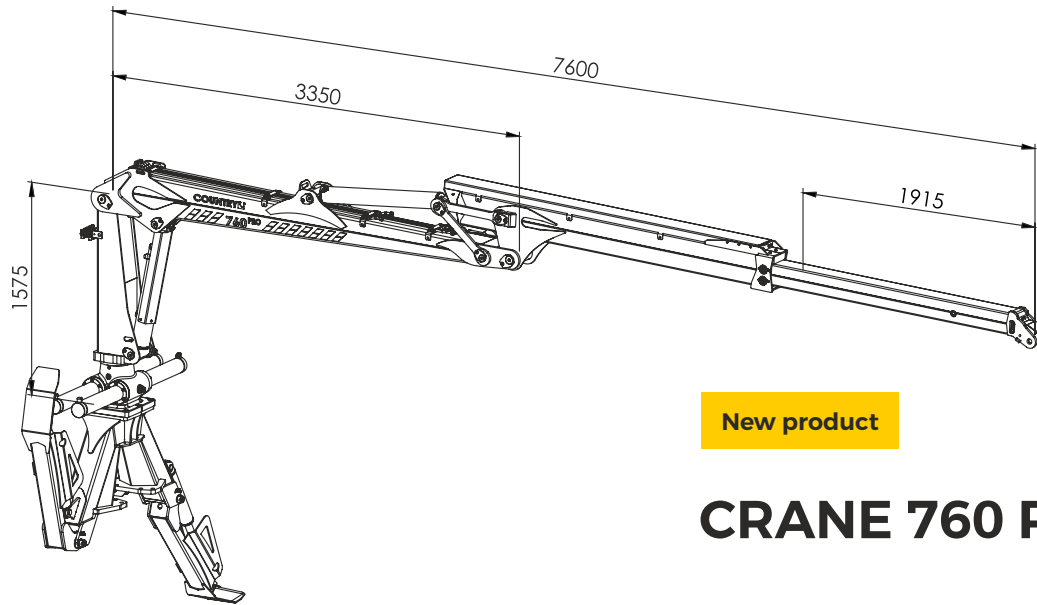
	700 Pro
Max reach (m)	7.0
Lifting torque gross (kNm)	50
Lifting capacity at 3,5 m w/o rotator and grapple (kg)	1120
Lifting capacity at full reach w/o rotator and grapple (kg)	560
Slewing torque (kNm)	15
Slewing cylinders (pcs)	4
Slewing angle	380
Rotator max axial load (kN)	40
Telescope extension (pcs)	1
Telescopic boom stroke length (m)	1.8
Working pressure (bar)	190
Crane's weight without support legs and valve block (kg)	690
Recommended oil pump capacity (l/min)	40-55
Support legs type	A or FD
A type (telescopic) support legs weight (kg)	319
FD type SMART (flap down) support legs weight (kg)	-
FD type MASTER (flap down) support legs weight (kg)	338
FD type PRO (flap down) support legs weight (kg)	420
Recommended grapple	0.19 Pro / 0.22 0.23 Pro / 0.27 Pro



CRANE 720 Pro

	720 Pro
Max reach (m)	7.2
Lifting torque gross (kNm)	60
Lifting capacity at 3,5 m w/o rotator and grapple (kg)	1339
Lifting capacity at full reach w/o rotator and grapple (kg)	651
Slewing torque (kNm)	17
Slewing cylinders (pcs)	4
Slewing angle	380
Rotator max axial load (kN)	40
Telescope extension (pcs)	1
Telescopic boom stroke length (m)	1.9
Working pressure (bar)	200
Crane's weight without support legs and valve block (kg)	780
Reccommended oil pump capacity (l/min)	50-65
Support legs type	A or FD
A type (telescopic) support legs weight (kg)	319
FD type SMART (flap down) support legs weight (kg)	-
FD type MASTER (flap down) support legs weight (kg)	-
FD type PRO (flap down) support legs weight (kg)	420
Reccommended grapple	0.19 Pro / 0.22 0.23 Pro / 0.27 Pro



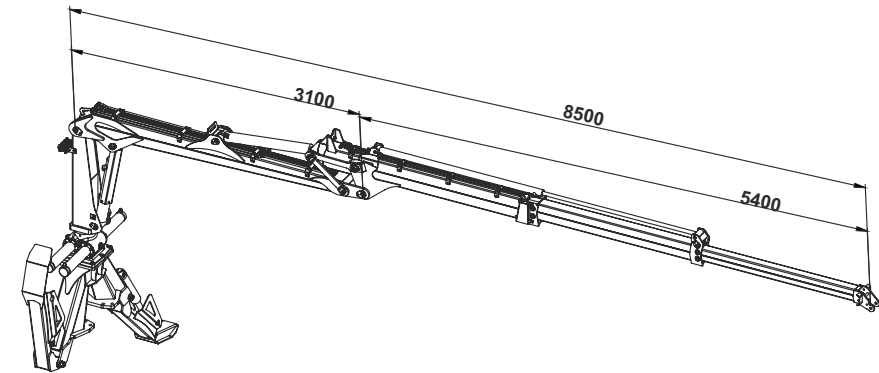
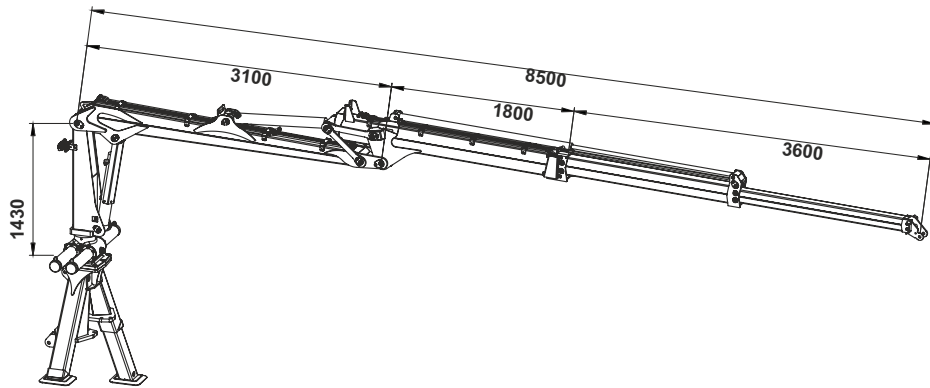


New product

CRANE 760 Pro



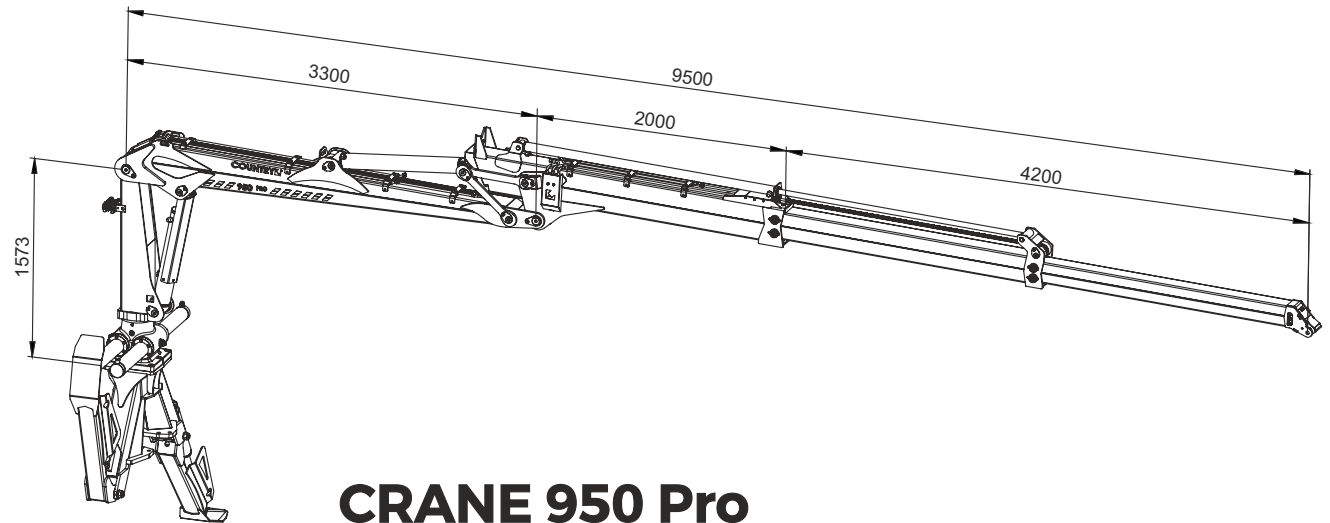
	760 Pro
Max reach (m)	7.6
Lifting torque gross (kNm)	86
Lifting capacity at 3,5 m w/o rotator and grapple (kg)	1871
Lifting capacity at full reach w/o rotator and grapple (kg)	861
Slewing torque (kNm)	21.5
Slewing cylinders (pcs)	4
Slewing angle	380
Rotator max axial load (kN)	55
Telescope extension (pcs)	1
Telescopic boom stroke length (m)	1.9
Working pressure (bar)	200
Crane's weight without support legs and valve block (kg)	1180
Recommended oil pump capacity (l/min)	60-100
Support legs type	FD Pro
A type (telescopic) support legs weight (kg)	-
FD type SMART (flap down) support legs weight (kg)	-
FD type MASTER (flap down) support legs weight (kg)	-
FD type PRO (flap down) support legs weight (kg)	420
Recommended grapple	0.22 / 0.23 Pro 0.27 Pro



CRANE 850 Pro

	850 Pro
Max reach (m)	8.5
Lifting torque gross (kNm)	60
Lifting capacity at 3,5 m w/o rotator and grapple (kg)	1224
Lifting capacity at full reach w/o rotator and grapple (kg)	504
Slewing torque (kNm)	17
Slewing cylinders (pcs)	4
Slewing angle	380
Rotator max axial load (kN)	40
Telescope extension (pcs)	2
Telescopic boom stroke lenght (m)	3.6
Working pressure (bar)	200
Crane`s weight without support legs and valve block (kg)	857
Reccommended oil pump capacity (l/min)	50-65
Support legs type	A or FD Pro
A type (telescopic) support legs weight (kg)	319
FD type SMART (flap down) support legs weight (kg)	-
FD type MASTER (flap down) support legs weight (kg)	-
FD type PRO (flap down) support legs weight (kg)	420
Reccommended grapple	0.22 / 0.23 Pro 0.27 Pro





CRANE 950 Pro



	950 Pro
Max reach (m)	9.5
Lifting torque gross (kNm)	86
Lifting capacity at 3,5 m w/o rotator and grapple (kg)	1536
Lifting capacity at full reach w/o rotator and grapple (kg)	566
Slewing torque (kNm)	21.5
Slewing cylinders (pcs)	4
Slewing angle	380
Rotator max axial load (kN)	55
Telescope extension (pcs)	2
Telescopic boom stroke length (m)	4.2
Working pressure (bar)	200
Crane`s weight without support legs and valve block (kg)	1318
Reccommended oil pump capacity (l/min)	60-100
Support legs type	FD Pro
A type (telescopic) support legs weight (kg)	-
FD type SMART (flap down) support legs weight (kg)	-
FD type MASTER (flap down) support legs weight (kg)	-
FD type PRO (flap down) support legs weight (kg)	420
Reccommended grapple	0.22 / 0.23 Pro 0.27 Pro

Cranes technical specifications

	410 Smart	430 Master	500 Smart	550 Master	670 Master	700 Pro	720 Pro	New	850 Pro	950 Pro
Max reach (m)	4.1	4.3	5.0	5.5	6.7	7.0	7.2	7.6	8.5	9.5
Lifting torque gross (kNm)	12	27	23	27	39	50	60	86	60	86
Lifting capacity at 3,5 m w/o rotator and grapple (kg)	280	660	550	618	870	1120	1339	1871	1224	1536
Lifting capacity at full reach w/o rotator and grapple (kg)	180	538	382	390	451	560	651	861	504	566
Slewing torque (kNm)	2 or 4	7.8	6.3	7.8	12	15	17	21.5	17	21.5
Slewing cylinders (pcs)	2 or 4	4	4	4	4	4	4	4	4	4
Slewing angle	360	370	370	370	380	380	380	380	380	380
Rotator max axial load (kN)	10	30	30	30	30	40	40	55	40	55
Telescope extension (pcs)	1	-	1	1	1	1	1	1	2	2
Telescopic boom stroke lenght (m)	0.9	-	1.1	1.3	1.7	1.8	1.9	1.9	3.6	4.2
Working pressure (bar)	175	180	180	180	190	190	200	200	200	200
Crane`s weight without support legs and valve block (kg)	167	335	315	375	565	690	780	1180	857	1318
Reccommended oil pump capacity (l/min)	5-15	20-35	15-30	20-35	30-45	40-55	50-65	60-100	50-65	60-100
Support legs type	FD	FD	A or FD	FD	A or FD	A or FD	A or FD	FD Pro	A or FD Pro	FD Pro
A type (telescopic) support legs weight (kg)	-	-	92	-	319	319	319	-	319	-
FD type SMART (flap down) support legs weight (kg)	60	-	91	-	-	-	-	-	-	-
FD type MASTER (flap down) support legs weight (kg)	-	135	-	135	338	338	-	-	-	-
FD type PRO (flap down) support legs weight (kg)	-	-	-	-	420	420	420	420	420	420
Reccommended grapple	0.08	0.12	0.12	0.12	0.17	0.19 Pro	0.19 Pro	0.22	0.22	0.22
		0.15 Pro	0.15 Pro	0.15 Pro	0.19 Pro	0.22 Pro	0.22 Pro	0.23 Pro	0.23 Pro	0.23 Pro
		0.17		0.17	0.22	0.23 Pro	0.23 Pro	0.27 Pro	0.27 Pro	0.27 Pro
					0.23 Pro	0.27 Pro	0.27 Pro			

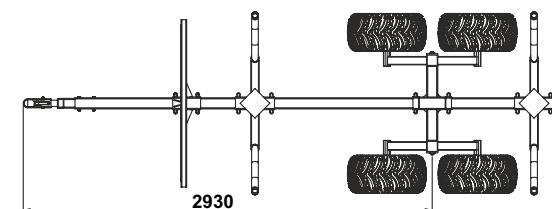
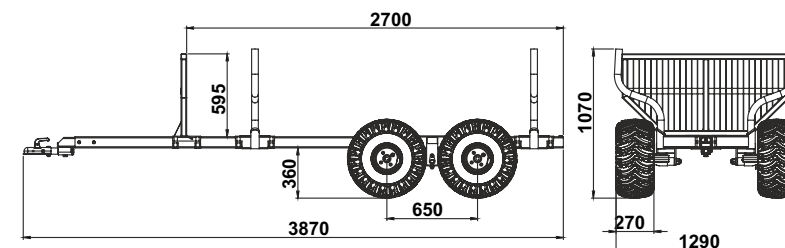
Trailers technical specifications

	15S	30S	50S	70S	90S	90SU	New 90SU Swing	90D	90DU	110S
Max load (kg)	1500	3000	5000	7000	9000	9000	9000	9000	9000	11000
Total length (mm)	3870	5340	5655	5625	6240	6240	6095	6200	6200	6200
Total width with standard wheels (mm)	1290	1540	1775	2000	2150	2150	2150	2200	2200	2290
Standard wheels	22.0/11-8	10.0/80-12	400/60-15,5	400/60-15,5	400/60-15,5	400/60-15,5	400/60-15,5	400/60-15,5	400/60-15,5	500/50-17
Length of loading area (mm)	2700	3000	3600	3500	3880	3880	3880	3900	3900	3850
Loading area (m ²)	0.65	1,0	1,35	1,5	2,1	2,1-2,6	2,1-2,6	2,1	2,1-2,6	2,5
Chassis (mm)	80x80	100x100	120x120	140x140	160x160	160x160	160x160	2 (200x100)	2 (200x100)	200x200
4 WD (roller drive between wheels)	Option	Option	Option	Option	Option	Option	-	Option	Option	Option
2 WD (inner drum drive)	-	-	-	-	Option	Option	Option	Option	Option	Option
Hydraulic brakes	-	Option	Option	Option	Option	Option	Option	Option	Option	Option
Pneumatic brakes	-	Option	Option	Option	Option	Option	Option	Option	Option	Option
Overrun brakes	Option	Option	Option	Option	-	-	-	-	-	-
Drawbar steering	-	Option	Option	Option	Option	Option	-	Standard	Standard	Standard
Drawbar steering cylinders (PCS)	-	1 or 2	1 or 2	1 or 2	2	2	-	2	2	2
Steering drive axle	-	-	-	-	-	-	Standard	-	-	-
Max allowed crane (kNm)	15	25	30	40	60	60	60	60	60	70
Trailer weight w/o crane and wheels (kg)	170	380	740	820	1220	1380	1470	1548	1670	1540

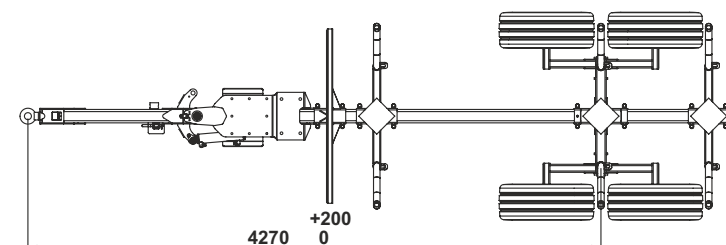
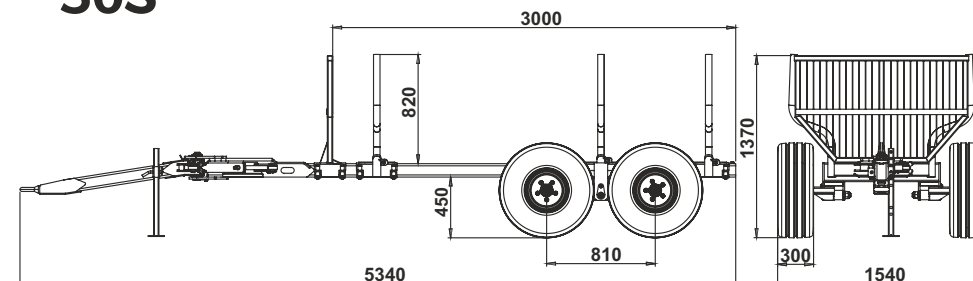
	New 110SU	New 110SU Swing	110D	New 110D Heavy	110DU	New 110DU Heavy	130D	130DU	150D	150DU
Max load (kg)	11000	11000	11000	11000	11000	11000	13000	13000	15000	15000
Total length (mm)	6200	6180	6360	6360	6360	6360	6470	6470	6520	6520
Total width with standard wheels (mm)	2290	2290	2280	2280	2280	2280	2440	2440	2500	2500
Standard wheels	500/50-17	500/50-17	500/50-17	500/50-17	500/50-17	500/50-17	550/45-22,5	550/45-22,5	550/45-22,5	550/45-22,5
Length of loading area (mm)	3850	3900	4045	4045	4045	4045	4150	4150	4190	4190
Loading area (m ²)	2,5 - 3,2	2,5 - 3,2	2,5	2,5	2,5 - 3,2	2,5 - 3,2	2,85	2,85 - 3,5	3,2	3,2 - 3,9
Chassis (mm)	200x200	200x200	2 (200x100)	2 (200x100)	2 (200x100)	2 (200x100)	2 (200x120)	2 (200x120)	2 (200x120)	2 (200x120)
4 WD (roller drive between wheels)	Option	-	Option	Option	Option	Option	Option	Option	Option	Option
2 WD (inner drum drive)	Option	Option	Option	Option	Option	Option	Option	Option	Option	Option
Hydraulic brakes	Option	Option	Option	Option	Option	Option	Option	Option	Option	Option
Pneumatic brakes	Option	Option	Option	Option	Option	Option	Option	Option	Option	Option
Overrun brakes	-	-	-	-	-	-	-	-	-	-
Drawbar steering	Standard	-	Standard	Standard	Standard	Standard	Standard	Standard	Standard	Standard
Drawbar steering cylinders (PCS)	2	-	2	2	2	2	2	2	2	2
Steering drive axle	-	Standard	-	-	-	-	-	-	-	-
Max allowed crane (kNm)	70	70	75	75	75	75	80	80	80	80
Trailer weight w/o crane and wheels (kg)	1610	1700	1620	1700	1845	1925	1770	1990	1905	2130



15S



30S

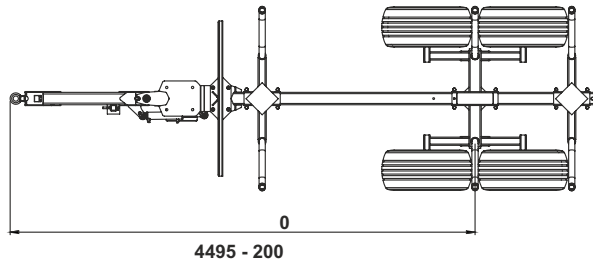
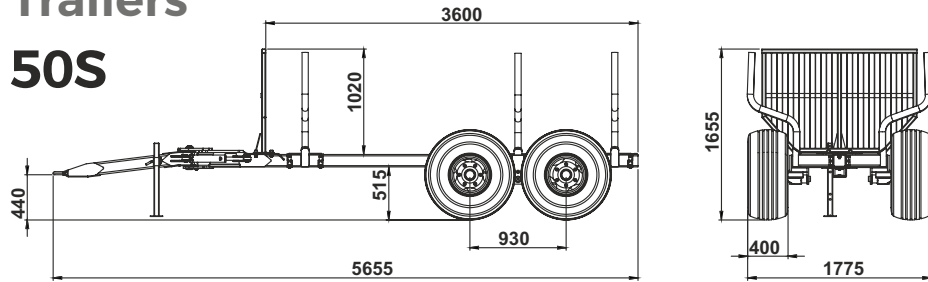


TRAILER 15S / 30S

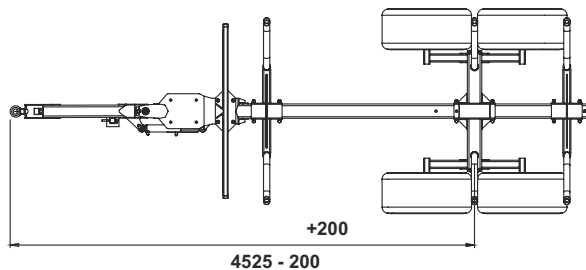
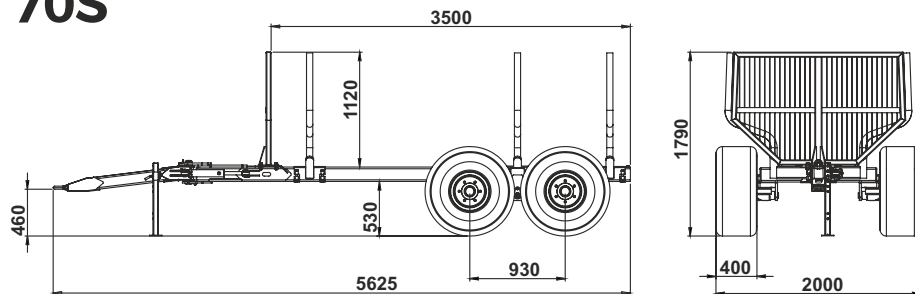
	15S	30S
Max load (kg)	1500	3000
Total length (mm)	3870	5340
Total width with standard wheels (mm)	1290	1540
Standard wheels	22.0/11-8	10.0/80-12
Length of loading area (mm)	2700	3000
Loading area (m ²)	0.65	1,0
Chassis (mm)	80x80	100x100
4 WD (roller drive between wheels)	Option	Option
2 WD (inner drum drive)	-	-
Hydraulic brakes	-	Option
Pneumatic brakes	-	Option
Overrun brakes	Option	Option
Drawbar steering	-	Option
Drawbar steering cylinders (PCS)	-	1 or 2
Steering drive axle	-	-
Max allowed crane (kNm)	15	25
Trailer weight w/o crane and wheels (kg)	170	380

Trailers

50S



70S



TRAILER 50S / 70S

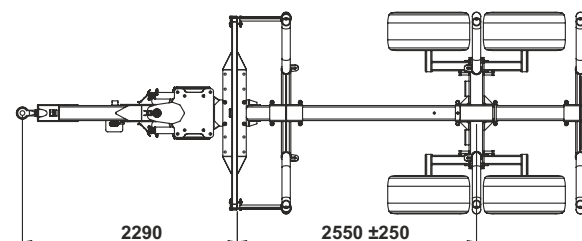
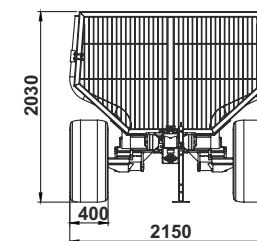
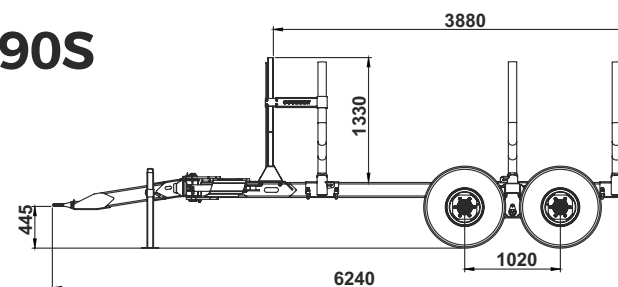
	50S	70S
Max load (kg)	5000	7000
Total length (mm)	5655	5625
Total width with standard wheels (mm)	1775	2000
Standard wheels	400/60-15,5	400/60-15,5
Length of loading area (mm)	3600	3500
Loading area (m ²)	1,35	1,5
Chassis (mm)	120x120	140x140
4 WD (roller drive between wheels)	Option	Option
2 WD (inner drum drive)	-	-
Hydraulic brakes	Option	Option
Pneumatic brakes	Option	Option
Overrun brakes	Option	Option
Drawbar steering	Option	Option
Drawbar steering cylinders (PCS)	1 or 2	1 or 2
Steering drive axle	-	-
Max allowed crane (kNm)	30	40
Trailer weight w/o crane and wheels (kg)	740	820



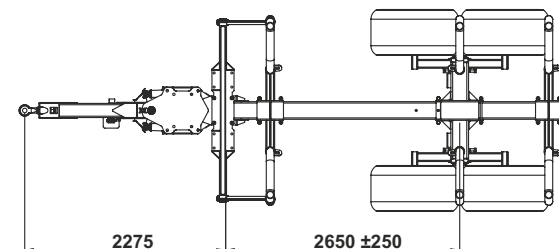
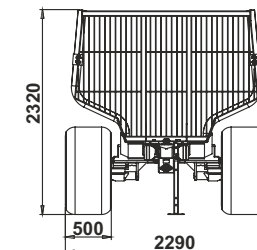
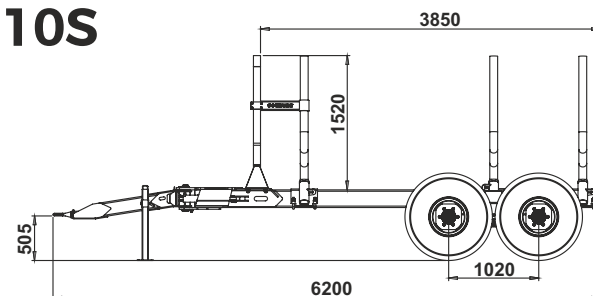
TRAILER 90S / 110S

	90S	110S
Max load (kg)	9000	11000
Total length (mm)	6240	6200
Total width with standard wheels (mm)	2150	2290
Standard wheels	400/60-15,5	500/50-17
Length of loading area (mm)	3880	3850
Loading area (m ²)	2,1	2,5
Chassis (mm)	160x160	200x200
4 WD (roller drive between wheels)	Option	Option
2 WD (inner drum drive)	Option	Option
Hydraulic brakes	Option	Option
Pneumatic brakes	Option	Option
Overrun brakes	-	-
Drawbar steering	Option	Standard
Drawbar steering cylinders (PCS)	2	2
Steering drive axle	-	-
Max allowed crane (kNm)	60	70
Trailer weight w/o crane and wheels (kg)	1220	1540

90S

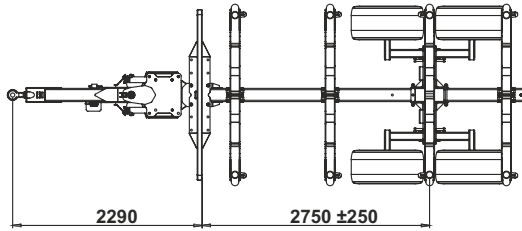
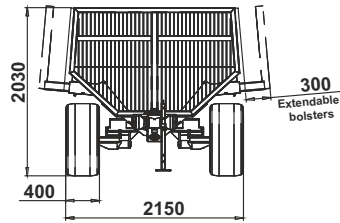
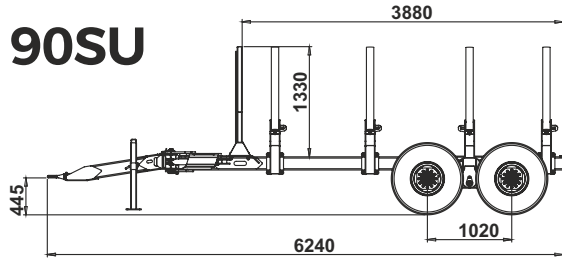


110S

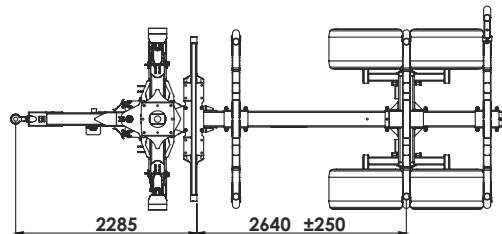
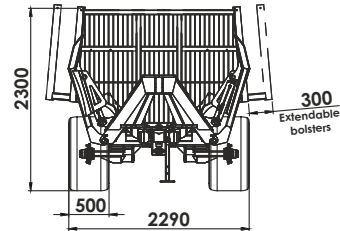
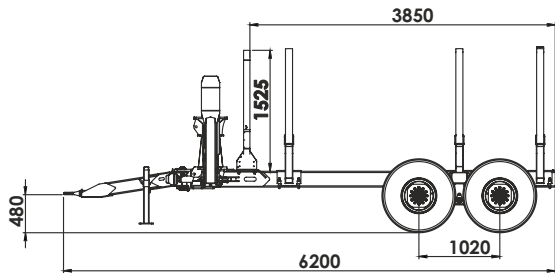


Trailers

90SU

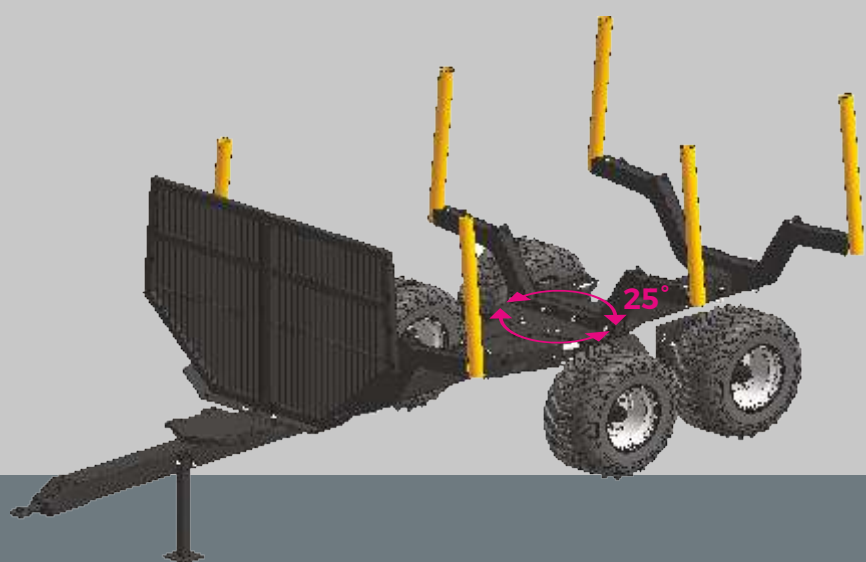


110SU



TRAILER 90SU/110SU

	90SU	110SU
Max load (kg)	9000	11000
Total length (mm)	6240	6200
Total width with standard wheels (mm)	2150	2290
Standard wheels	400/60-15,5	500/50-17
Length of loading area (mm)	3880	3850
Loading area (m ²)	2,1-2,6	2,5 - 3,2
Chassis (mm)	160x160	200x200
4 WD (roller drive between wheels)	Option	Option
2 WD (inner drum drive)	Option	Option
Hydraulic brakes	Option	Option
Pneumatic brakes	Option	Option
Overrun brakes	-	-
Drawbar steering	Option	Standard
Drawbar steering cylinders (PCS)	2	2
Steering drive axle	-	-
Max allowed crane (kNm)	60	70
Trailer weight w/o crane and wheels (kg)	1380	1610



TRAILER 90SU Swing / 110SU Swing

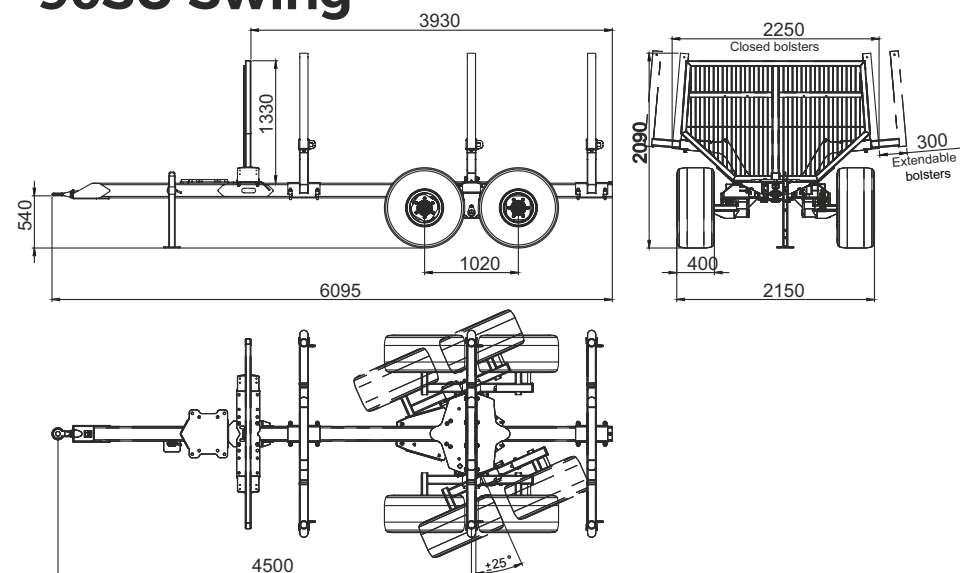
	90SU Swing	110SU Swing
Max load (kg)	9000	11000
Total length (mm)	6095	6180
Total width with standard wheels (mm)	2150	2290
Standard wheels	400/60-15,5	500/50-17
Length of loading area (mm)	3880	3900
Loading area (m ²)	2,1-2,6	2,5 - 3,2
Chassis (mm)	160x160	200x200
4 WD (roller drive between wheels)	-	-
2 WD (inner drum drive)	Option	Option
Hydraulic brakes	Option	Option
Pneumatic brakes	Option	Option
Overrun brakes	-	-
Drawbar steering	-	-
Drawbar steering cylinders (PCS)	-	-
Steering drive axle	Standard	Standard
Max allowed crane (kNm)	60	70
Trailer weight w/o crane and wheels (kg)	1470	1700

New product

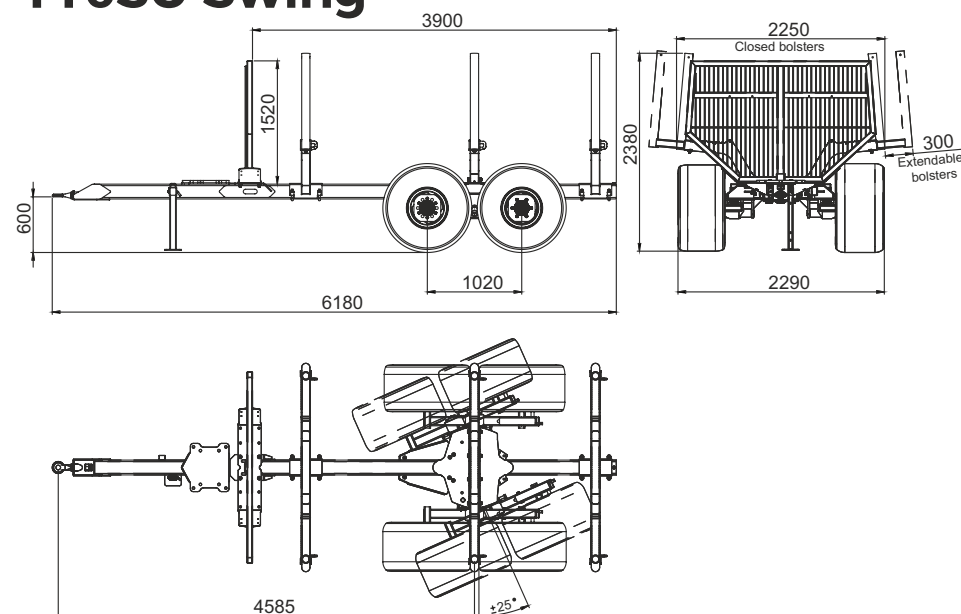
COUNTRY

Trailers

90SU Swing

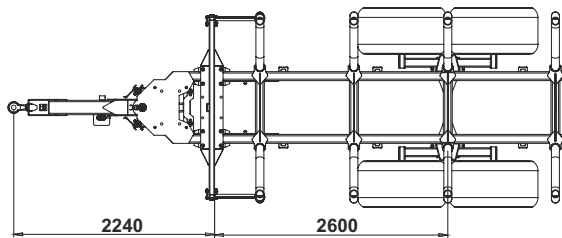
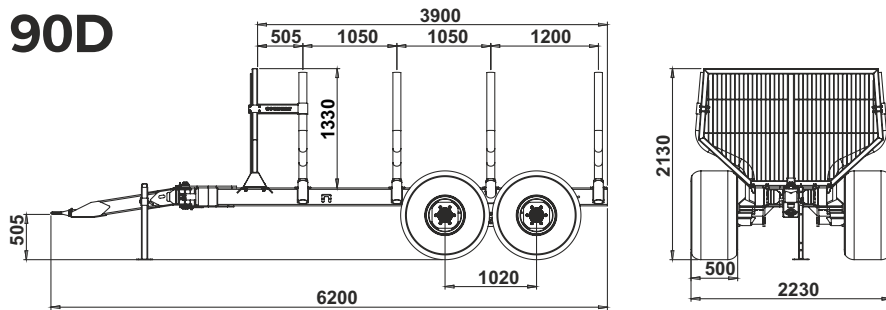


110SU Swing

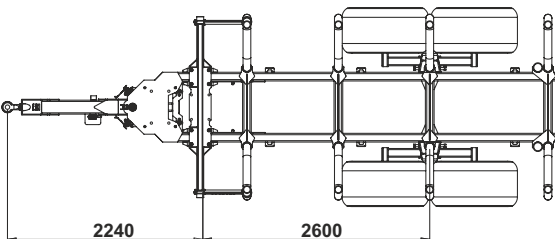
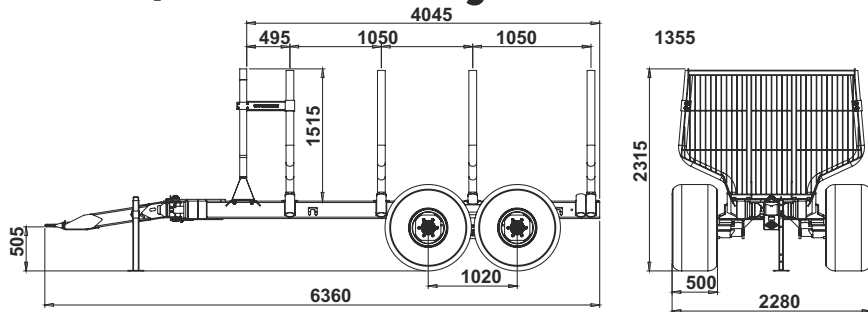


Trailers

90D



110D / 110D Heavy



TRAILER 90D / 110D / 110D Heavy

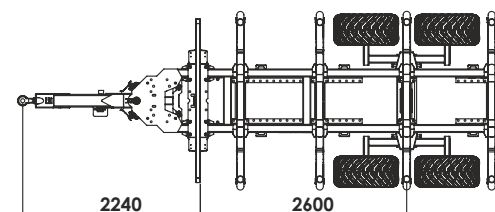
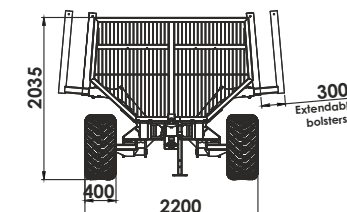
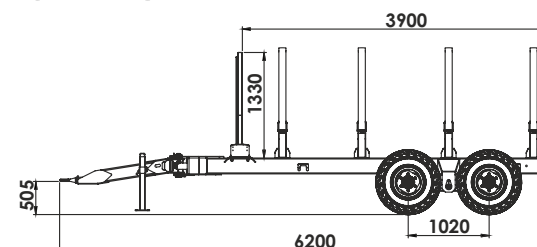
	90D	110D / 110D Heavy
Max load (kg)	9000	11000
Total length (mm)	6200	6360
Total width with standard wheels (mm)	2200	2280
Standard wheels	400/60-15,5	500/50-17
Length of loading area (mm)	3900	4045
Loading area (m ²)	2,1	2,5
Chassis (mm)	2 (200x100)	2 (200x100)
4 WD (roller drive between wheels)	Option	Option
2 WD (inner drum drive)	Option	Option
Hydraulic brakes	Option	Option
Pneumatic brakes	Option	Option
Overrun brakes	-	-
Drawbar steering	Standard	Standard
Drawbar steering cylinders (PCS)	2	2
Steering drive axle	-	-
Max allowed crane (kNm)	60	75
Trailer weight w/o crane and wheels (kg)	1548	1620 / 1700



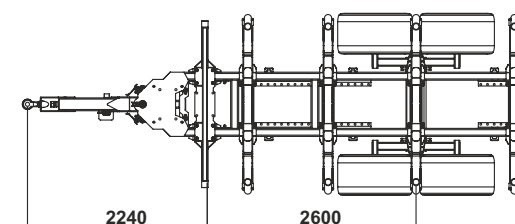
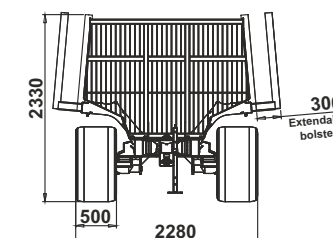
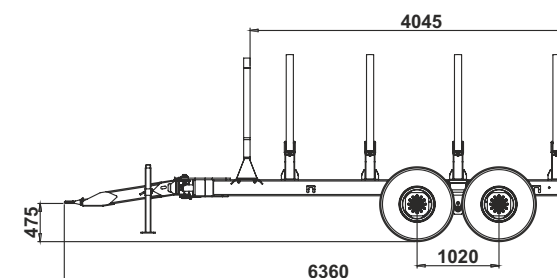
TRAILER 90DU / 110DU / 110DU Heavy

	90DU	110DU / 110DU Heavy
Max load (kg)	9000	11000
Total length (mm)	6200	6360
Total width with standard wheels (mm)	2200	2280
Standard wheels	400/60-15,5	500/50-17
Length of loading area (mm)	3900	4045
Loading area (m ²)	2,1-2,6	2,5 - 3,2
Chassis (mm)	2 (200x100)	2 (200x100)
4 WD (roller drive between wheels)	Option	Option
2 WD (inner drum drive)	Option	Option
Hydraulic brakes	Option	Option
Pneumatic brakes	Option	Option
Overrun brakes	-	-
Drawbar steering	Standard	Standard
Drawbar steering cylinders (PCS)	2	2
Steering drive axle	-	-
Max allowed crane (kNm)	60	75
Trailer weight w/o crane and wheels (kg)	1670	1845 / 1925

90DU

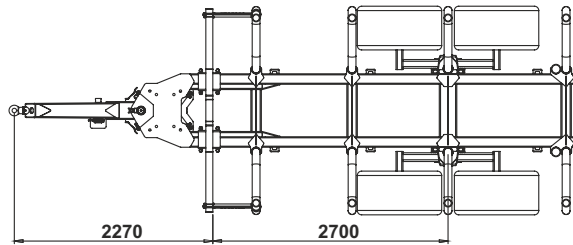
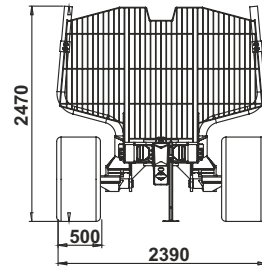
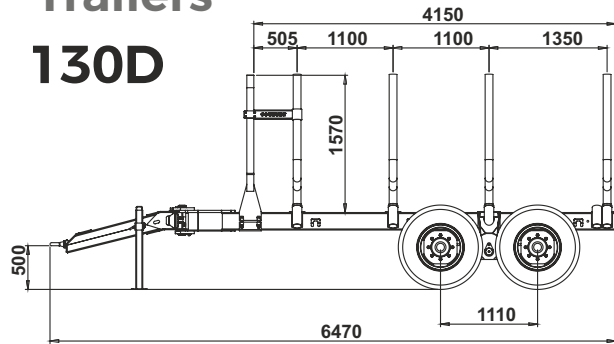


110DU / 110DU Heavy

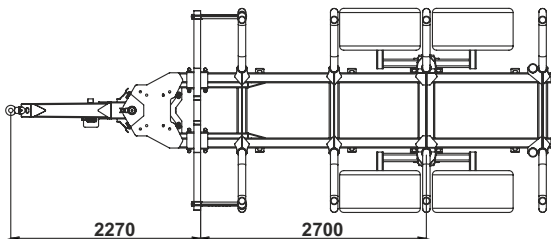
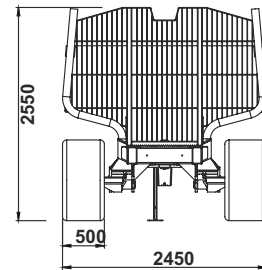
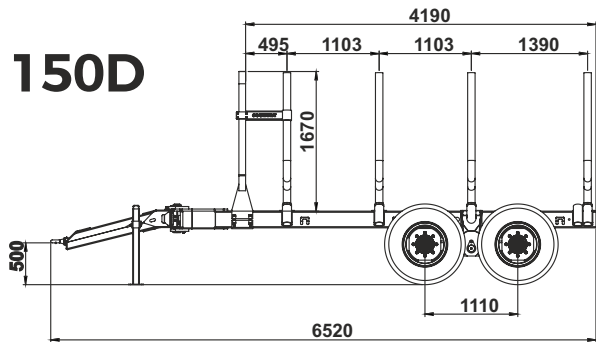


Trailers

130D



150D



TRAILER 130D / 150D

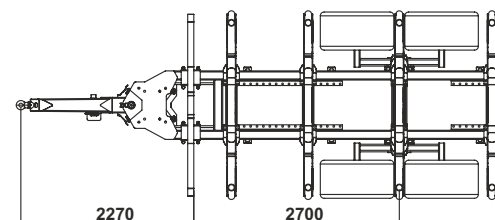
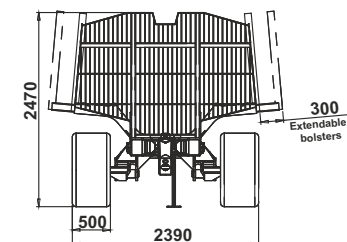
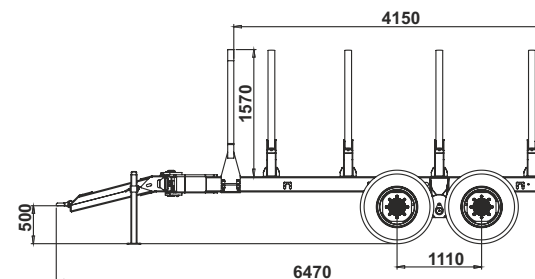
	130D	150D
Max load (kg)	13000	15000
Total length (mm)	6470	6520
Total width with standard wheels (mm)	2440	2500
Standard wheels	550/45-22,5	550/45-22,5
Length of loading area (mm)	4150	4190
Loading area (m ²)	2,85	3,2
Chassis (mm)	2 (200x120)	2 (200x120)
4 WD (roller drive between wheels)	Option	Option
2 WD (inner drum drive)	Option	Option
Hydraulic brakes	Option	Option
Pneumatic brakes	Option	Option
Overrun brakes	-	-
Drawbar steering	Standard	Standard
Drawbar steering cylinders (PCS)	2	2
Steering drive axle	-	-
Max allowed crane (kNm)	80	80
Trailer weight w/o crane and wheels (kg)	1770	1905



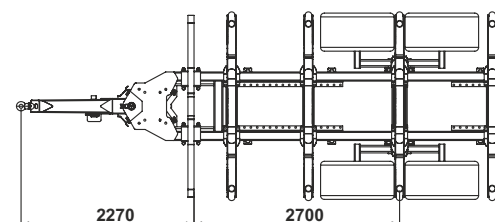
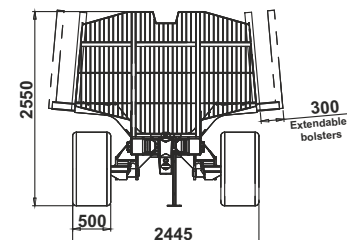
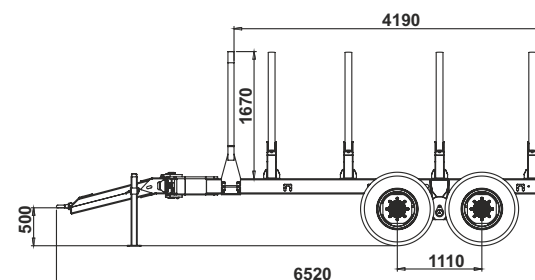
TRAILER 130DU / 150DU

	130DU	150DU
Max load (kg)	13000	15000
Total length (mm)	6470	6520
Total width with standard wheels (mm)	2440	2500
Standard wheels	550/45-22,5	550/45-22,5
Length of loading area (mm)	4150	4190
Loading area (m ²)	2,85 - 3,5	3,2 - 3,9
Chassis (mm)	2 (200x120)	2 (200x120)
4 WD (roller drive between wheels)	Option	Option
2 WD (inner drum drive)	Option	Option
Hydraulic brakes	Option	Option
Pneumatic brakes	Option	Option
Overrun brakes	-	-
Drawbar steering	Standard	Standard
Drawbar steering cylinders (PCS)	2	2
Steering drive axle	-	-
Max allowed crane (kNm)	80	80
Trailer weight w/o crane and wheels (kg)	1990	2130

130DU

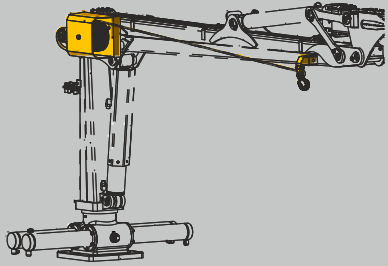


150DU

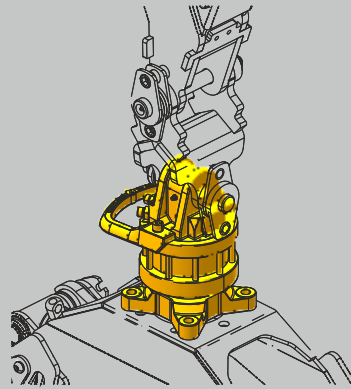


Cranes and trailers compatibility

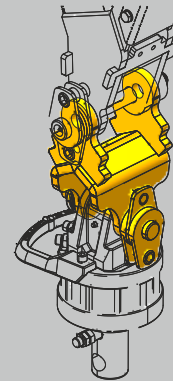
	410 Smart	430 Master	500 Smart	550 Master	670 Master	700 Pro	720 Pro	760 Pro	850 Pro	950 Pro
15S	x									
30S		x	x	x						
50S		x	x	x						
70S		x	x	x	x					
90S					x	x	x		x	
90SU					x	x	x		x	
90SU Swing					x	x	x		x	
90D					x	x	x		x	
90DU					x	x	x		x	
110S					x	x	x		x	
110SU					x	x	x		x	
110SU Swing					x	x	x		x	
110D					x	x	x		x	
110D Heavy					x	x	x	x	x	x
110DU					x	x	x		x	
110DU Heavy					x	x	x	x	x	x
130D					x	x	x	x	x	x
130DU					x	x	x	x	x	x
150D					x	x	x	x	x	x
150DU					x	x	x	x	x	x



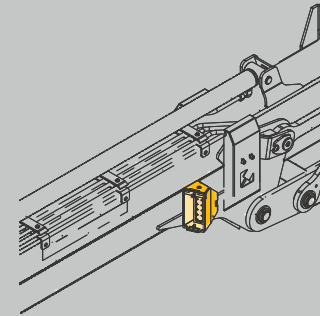
Radio Winch



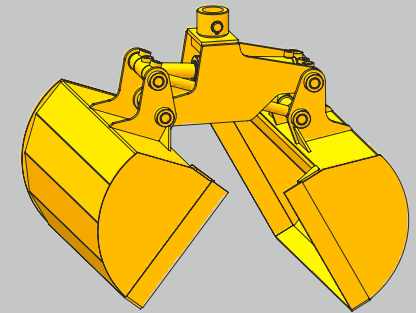
Flange rotator



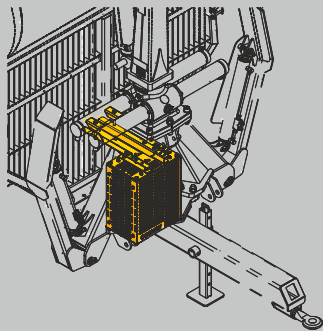
Brakelink for rotator



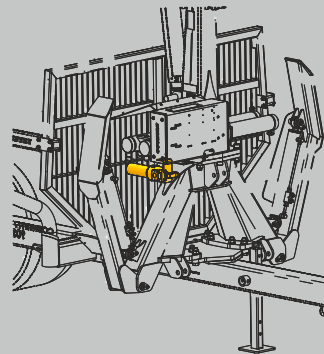
LED lights on crane



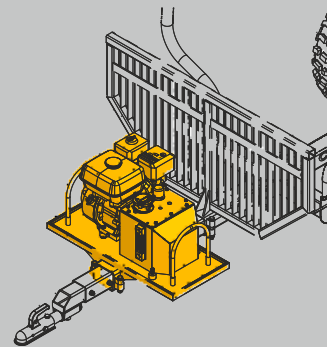
Earth bucket



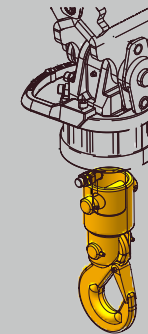
Oil cooler



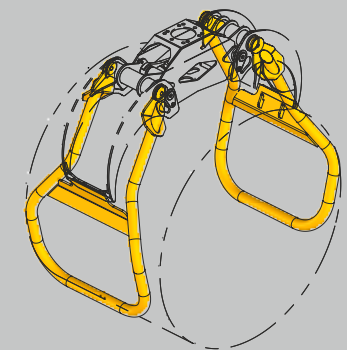
High pressure filter



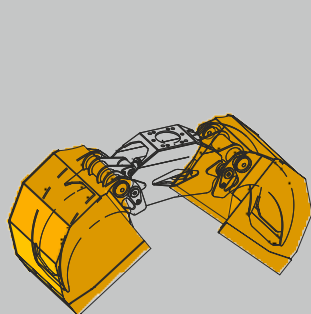
Hydraulic unit



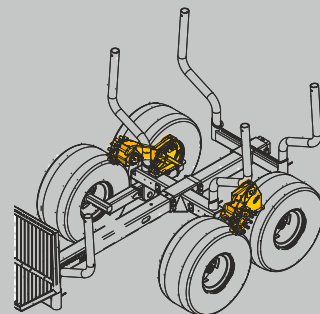
Rotator hook



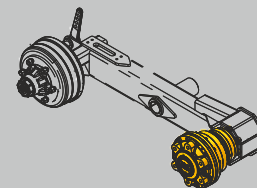
Grapples hay bale attachment



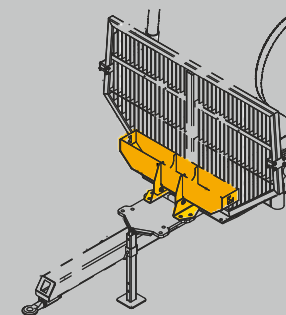
Grapples bucket attachment



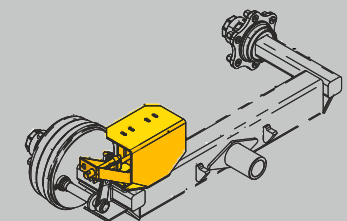
4WD roller drive



2WD/4WD Black Bruin

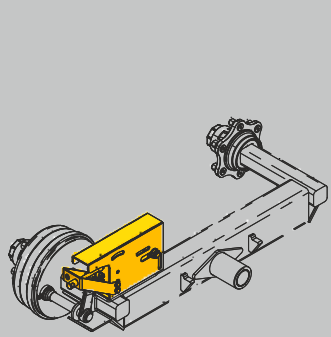


Toolbox

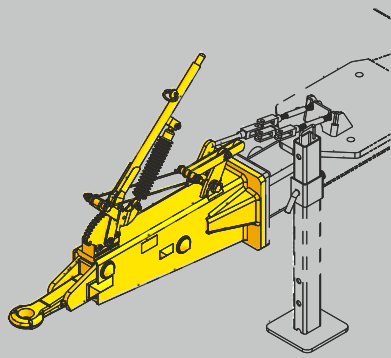


Air brakes

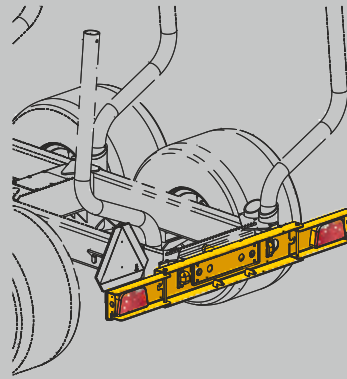
Accessories



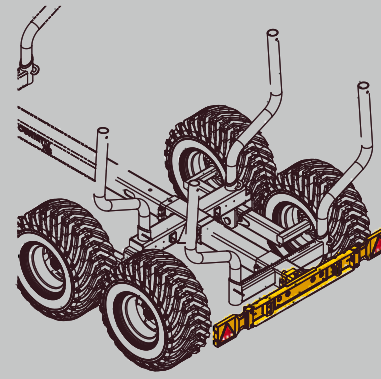
Hydraulic brakes



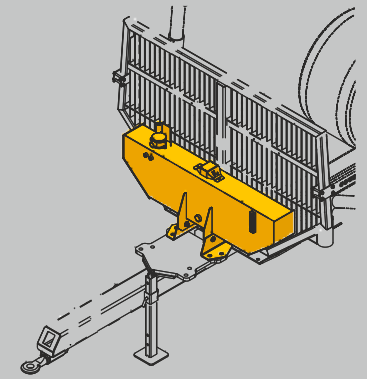
Overrun brakes



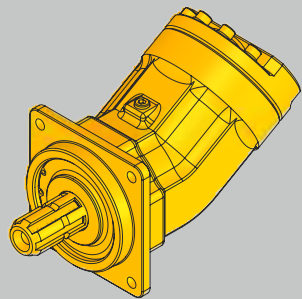
Foldable lights



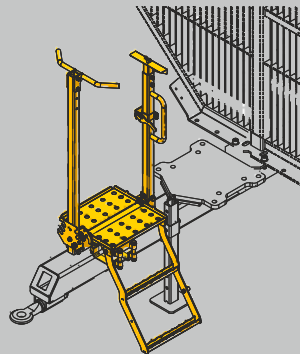
Kilpi lights



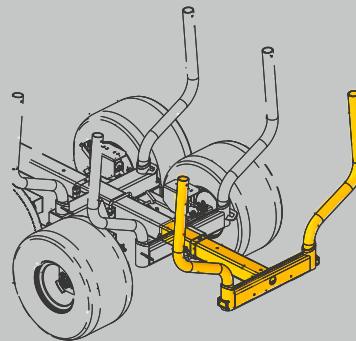
Oil tank



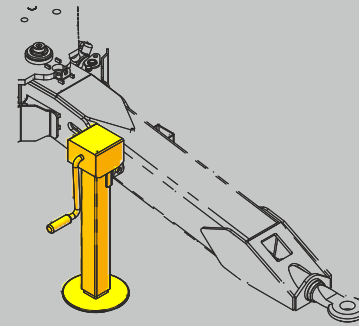
PTO piston pump



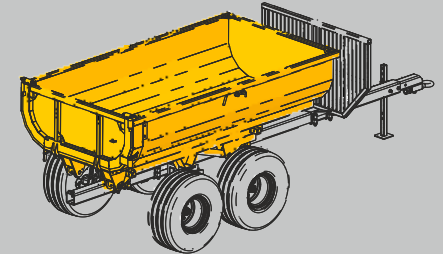
Platform



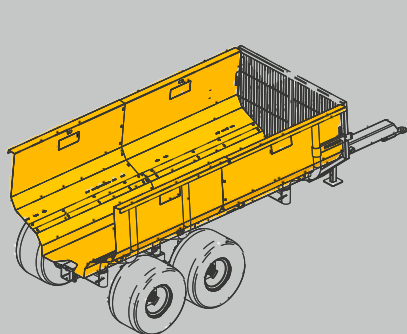
Telescopic extension



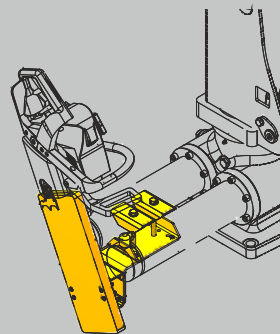
Adjustable standing leg



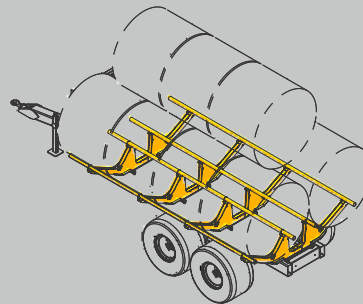
Dumper box



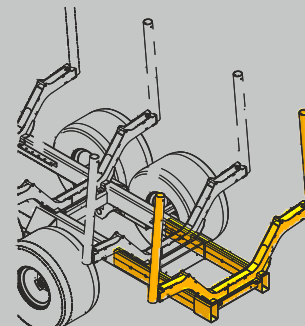
Biomass box



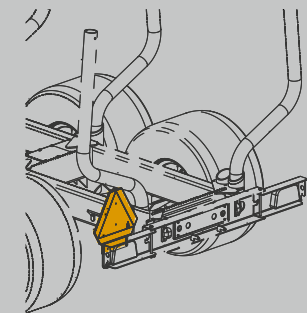
Chainsaw holder



Hay bale frame



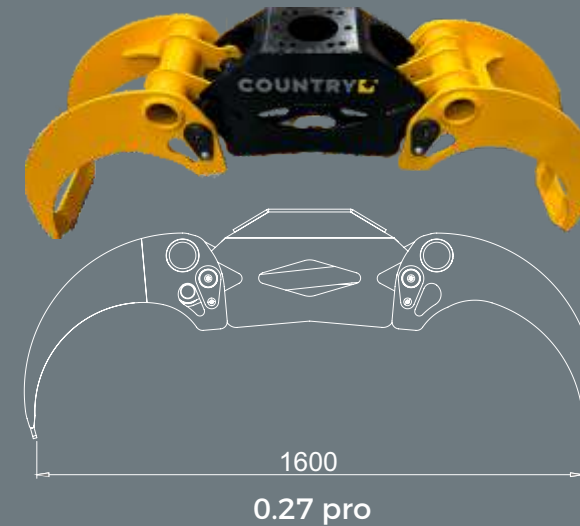
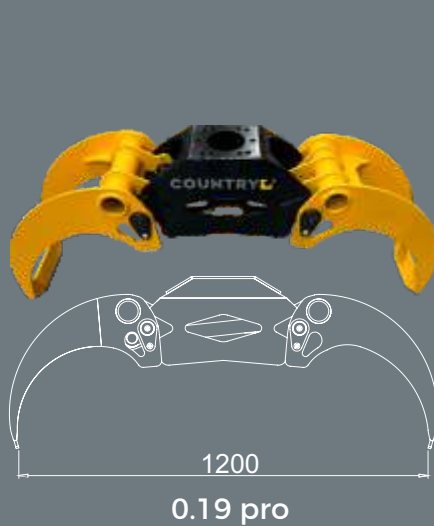
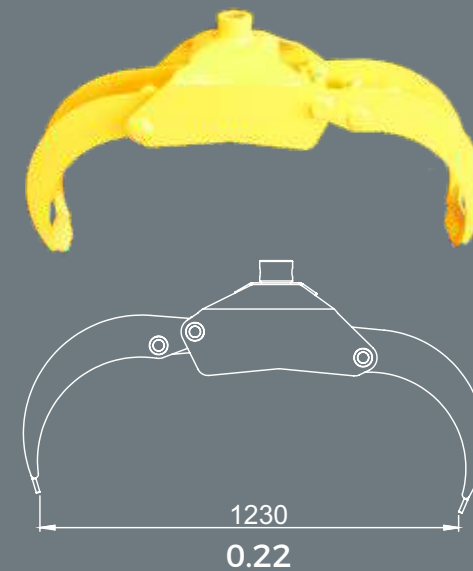
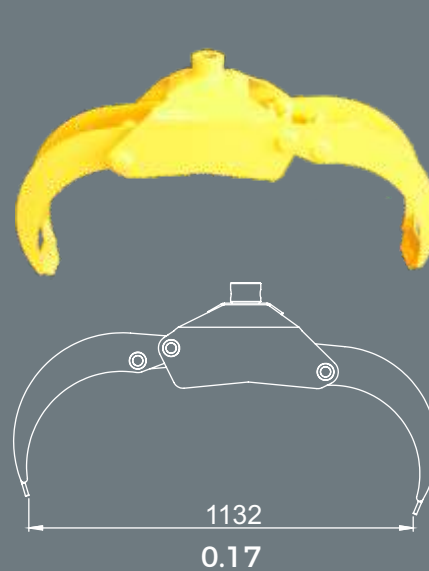
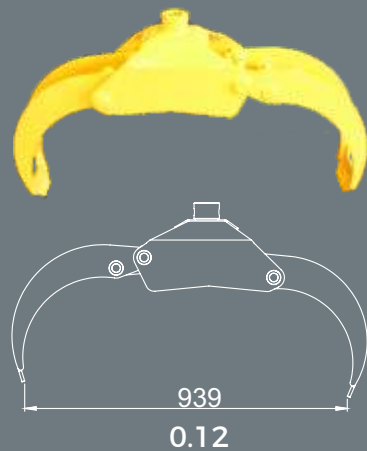
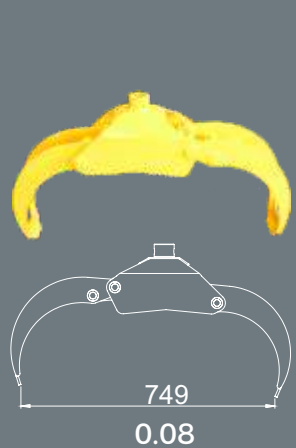
Telescopic extension DU



Slow vehicle sign

Grapples

Model	Area (m ²)	Weight (kg)	Max. open (mm)	Min. diameter (mm)
0.08	0.08	25	749	51
0.12	0.12	41	939	48
0.17	0.17	64	1132	52
0.22	0.22	105	1230	49
0.15 pro	0.15	60	1150	53
0.19 pro	0.19	90	1200	65
0.23 pro	0.23	110	1500	63
0.27 pro	0.27	147	1600	80



Control valves



Pre-Hydraulic Propo



Pre-Hydraulic On-Off



Mini-levers with adjustment tool



Mini-levers with display



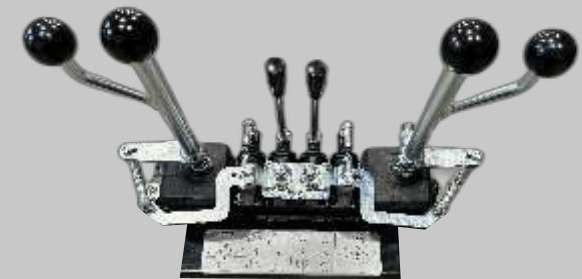
Remote control



6/8-XY



4/8-XY On-Off



4/8-XYZ

All Pro series cranes:

Crane frames are made of **STRENX**

All pins 42CrMo4

Powder coated

Oil inspection window in turning house

Gear rack 42CrMo4

Turning house body made from nodular cast iron EN-GJS 500-14

Extra strong PRO series supportlegs

Pro series grapples:

Brake link

Rotator hoses hidden inside the telescope

Made of **HARDOX**

Bronze bearings

All pins 42CrMo4

Main boom cylinder protection

Expandable loading area

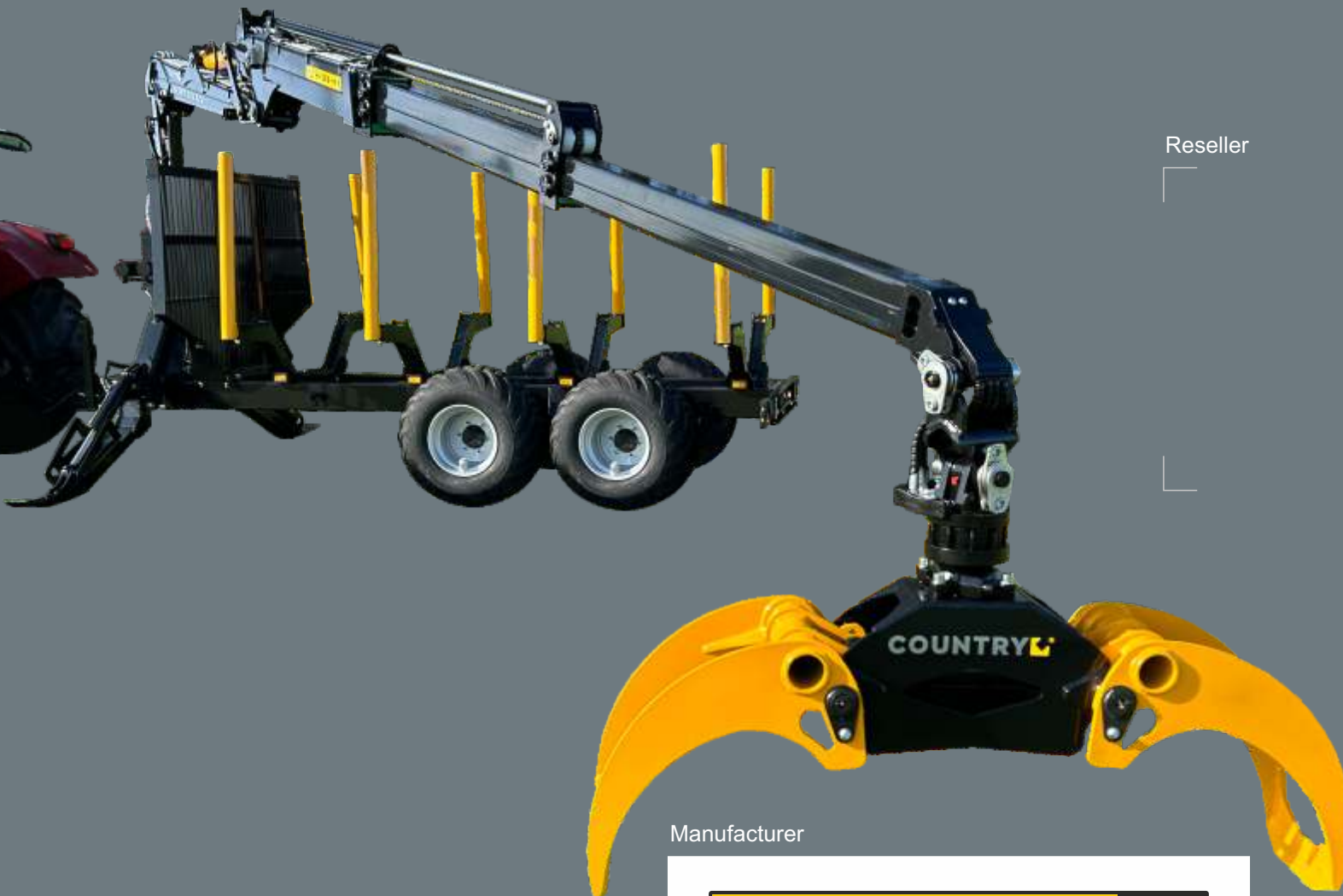
Trailers:

Frame made from S420

U-type frames made of **STRENX**

Special forest wheels

Bolsters 89x8



Reseller

Manufacturer



COUNTRY OÜ
Reg.nr: 12565983
Selja tee 17, Kunda
44105 Lääne-Virumaa
Estonia

Tel / Whatsapp: +372 50 41 362
Tel: +372 50 56 120

E-mail: sales@country.ee

www.country.ee